

## Ministerial Infrastructure Designation

A Ministerial Infrastructure Designation (MID) allows for the timely delivery of essential community supporting infrastructure, such as schools, hospitals and healthcare services. The MID process is an alternative assessment pathway to lodging a development application with the local government.

The MID assessment is focused on any direct impacts on the site, adjoining properties and the surrounding area including traffic, services, environmental values, and amenity. The MID process also involves extensive consultation with the community.

The Minister for State Development, Infrastructure, Local Government and Planning is responsible for making an infrastructure designation and will consider the adequacy of the environmental assessment and consultation.

The MID request (MID-0821-0518) for the Ipswich site has been made to the Planning Minister under Chapter 2, Part 5 of the *Planning Act 2016*.

## Formal public notification period

Community engagement is a requirement of the MID process.

Information about the Ipswich facility was gathered during the preliminary engagement phase from key stakeholders.

The formal public notification period for the Ipswich facility site is open from Friday 10 September 2021 and closes at midnight on Friday 8 October 2021.

### How to make a formal submission

You can make a formal submission about the proposed MID to the Infrastructure Designation team, Department of State Development, Infrastructure, Local Government and Planning

#### Online

<https://www.statedevelopment.qld.gov.au/mid-consultations>

#### Email

[infrastructuredesignation@dsdilgp.qld.gov.au](mailto:infrastructuredesignation@dsdilgp.qld.gov.au)

#### Post

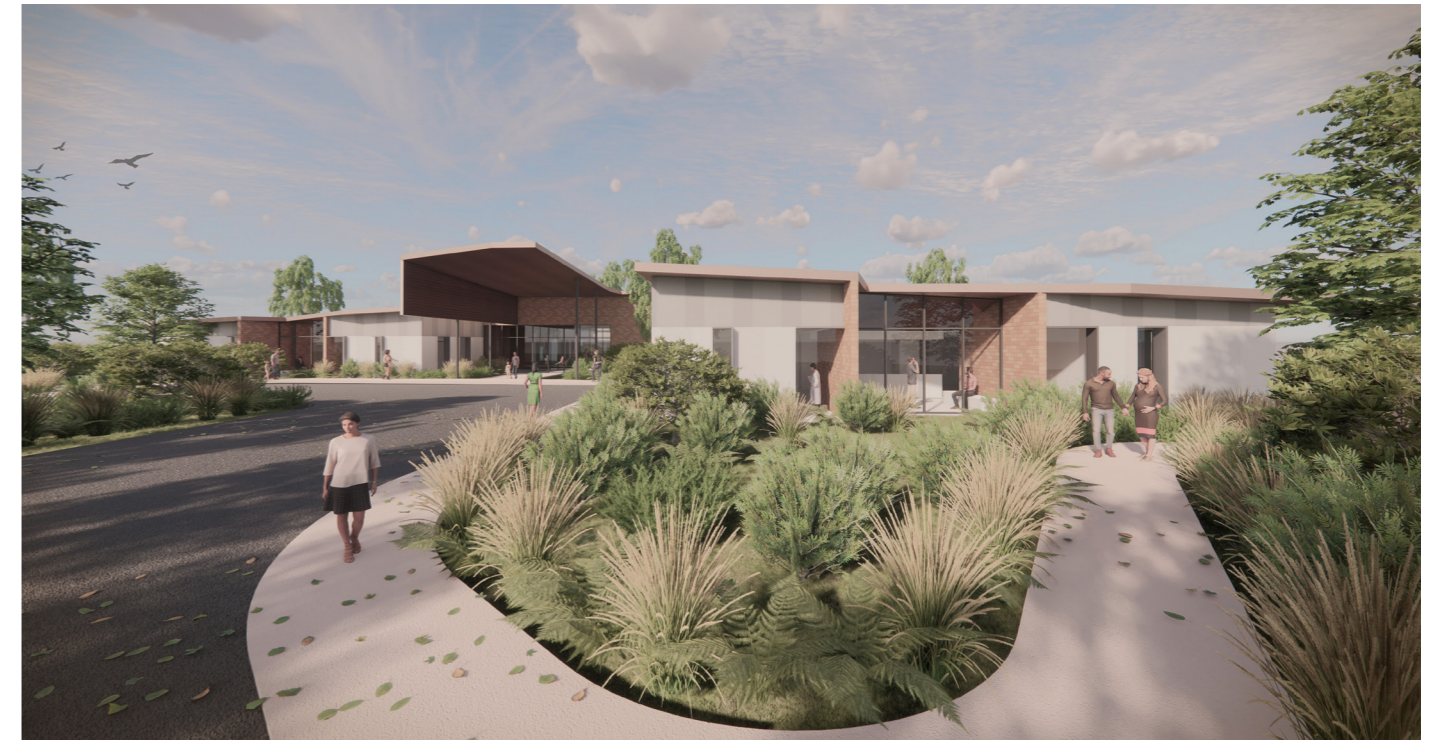
PO Box 15009, City East QLD 4002

If you wish to discuss the proposal, please contact the Infrastructure Designation team on 1300 967 433, or at the above email address.

In all submissions or enquires remember to quote the application number for the Ipswich site **MID-0821-0518**.

# Ipswich Satellite Hospital

**New healthcare facility. September 2021 – Public consultation.**



Concept design for satellite hospital - Ripley, Ipswich – indicative only and subject to change

Proposed site location and concept floor plan satellite hospital - Ripley, Ipswich – aerial view



Keep up to date about the project at [www.health.qld.gov.au/satellite-hospitals](http://www.health.qld.gov.au/satellite-hospitals)

Contact the Satellite Hospitals Program team:  
Email [SHP\\_engagement@health.qld.gov.au](mailto:SHP_engagement@health.qld.gov.au) Phone 07 3708 5051



## About the project

In October 2020, the Queensland Government committed to deliver seven new satellite hospital facilities to support public healthcare delivery in rapidly growing communities across South East Queensland.

Each healthcare facility will deliver a range of services depending on the needs of the local community and will incorporate outpatient community-based health services with virtual healthcare opportunities. Services offered could include simple day therapy services such

as chemotherapy, complex wound management, renal dialysis and care for minor injuries or illnesses.

Healthcare facilities under the Satellite Hospitals Program are planned for Bribie Island, Brisbane Northside, Brisbane Southside, Caboolture, Gold Coast, Ipswich and Redland.

These facilities will offer local communities healthcare services closer to home and in a more appropriate setting.

**The proposed site for this healthcare facility is 7005 Barrams Road, South Ripley QLD 4306 (Lot 7045 SP304391).**

## Ipswich satellite hospital project timeline



## Fast facts – Ipswich satellite hospital

Key topic area	Response
Purpose of the healthcare facilities	The purpose of these healthcare facilities is to specifically target early intervention and provide day therapy services, including renal dialysis, chemotherapy and other services, instead of providing overnight beds. This will help to free up capacity and increase bed availability in our other larger, public hospitals.
How the Ipswich site location was chosen	<p>The site for the Ipswich facility was already earmarked as a healthcare precinct in the Ripley Valley Master Plan.</p> <p>Therefore, consideration was already given to impacts on the local road network, school, traffic management and other potential impacts.</p> <p>An extensive site identification process was used to determine the most suitable, fit-for-purpose site. Factors considered as part of the site identification process included:</p> <ul style="list-style-type: none"> <li>• size, suitability for built infrastructure and potential environmental issues</li> <li>• locality to relevant rapidly growing communities</li> <li>• community need</li> <li>• planning or zoning restrictions/considerations</li> <li>• budget implications.</li> </ul> <p>The site still needs to undergo a MID process to ensure its suitability, and this includes undertaking studies including traffic, stormwater management, acoustic and other studies to technically support whether the development is appropriate.</p>
Site investigations	<p>Site investigations were undertaken as part of the MID process. Detailed investigations included:</p> <ul style="list-style-type: none"> <li>• traffic impact assessment</li> <li>• stormwater management</li> <li>• acoustic assessment</li> <li>• services investigations (i.e. water, sewer, electricity, communications).</li> </ul> <p>These reports can be found as part of the MID lodgement on the Department of State Development, Infrastructure, Local Government and Planning (DSDILGP) infrastructure designations portal (MID-0821-0518 Ipswich Health Care Facility).</p>
Services the facilities will provide	<p>Planning for services to be provided at the new healthcare facilities is currently underway with the relevant Hospital and Health Service.</p> <p>The satellite hospital facilities will support emergency departments at major hospitals by giving people the option to access healthcare through minor injury and illness clinics within their local community.</p> <p>A range of services are being considered for each satellite hospital site including community health services, ambulatory and low acuity day therapy services such as renal dialysis, chemotherapy, complex wound management, urgent care for minor injury and illness, and outpatient activities.</p> <p>The facilities will not have an emergency department.</p> <p>These facilities will not provide drug and alcohol rehabilitation services.</p> <p>Ambulances will only access the facility in minor situations such as to collect a patient for transporting to a major hospital, or to deliver a patient who requires minor treatment for an injury or access to a day therapy such as chemotherapy.</p>
Construction timing	Construction of the satellite hospitals is planned to start in late 2021, and open and operational in 2023.

Zoning	The site was earmarked as a health precinct in the Ripley Valley Master Plan. The MID process will enable development for the healthcare facility to proceed. The MID will designate the site for the purposes of community infrastructure (hospitals and health care services).
Opening hours	The opening hours for the new healthcare facilities will be determined in conjunction with the relevant Health and Hospital Service. Day therapy services and treatment for minor injuries and illnesses will be in different sections of the facility (see concept floor plan). This will enable different opening hours for these areas of treatment.
Car parking	Free onsite car parking will be available for patients and staff. Ways to monitor car parking are currently under consideration.
Environmental issues	Each satellite hospital site is currently undergoing a MID process, where environmental impacts will be identified through site-based investigations and through community feedback.
Local road network impacts, including increased congestion and traffic management	Traffic impact assessment has been undertaken as part of the MID process. These studies will be available on the DSDILGP infrastructure designations portal. As an outcome, Queensland Health will implement any recommendations made by its traffic engineering consultants, to address broader network impacts attributable to the satellite healthcare facility project.
Noise impacts	Noise studies are being considered as part of the MID process. These studies will be available on the DSDILGP infrastructure designations portal. As an outcome, Queensland Health will implement any recommendations made by its acoustic engineering consultant to address acoustic impacts likely to be generated by the satellite healthcare facility project.
Building type	The building will be modular in design and will be architecturally and aesthetically designed to blend with the surrounding landscape. Cultural elements are also being considered as part of the design process by engaging with consumer and user groups and First Nations Peoples.
Access to public transport	As the Ipswich site was already earmarked as a health precinct, public and active transport options are under consideration. This includes access to buses or ride share options, and the provision of walkways and bike paths.
Proximity to local residents, schools and families	<p>The area was earmarked as a health precinct within the Ripley Valley Master Plan, therefore consideration of proximity to residents, schools and families has been considered as part of the land use outcome for the area.</p> <p>Further consideration of direct impacts by the project on surrounding land uses will be considered through technical reports under the MID process. These reports will be available on the DSDILGP infrastructure designations portal.</p>
Provision of other medical or healthcare options (i.e. dentist etc)	Provision of other commercial healthcare options is at the discretion of the West Moreton Hospital and Health Service. These factors are currently being considered as part of the future planning for the site.