



Caring Better Together

Community Profiles Report

West Moreton Hospital and Health Service

October 2019

Author: Melissa Ram, Senior Planning Officer, Strategy and Planning, West Moreton Health

Table of contents

TABLE OF CONTENTS	2
ABOUT THIS REPORT	3
DATA SOURCES.....	3
ABOUT WEST MORETON HEALTH	4
COMMUNITY PROFILES – LOCKYER VALLEY	9
COMMUNITY PROFILES – BOONAH.....	15
COMMUNITY PROFILES – ESK	20
COMMUNITY PROFILES – GATTON	25
COMMUNITY PROFILES – SPRINGFIELD	32
COMMUNITY PROFILES – IPSWICH CITY.....	39
COMMUNITY PROFILES – IPSWICH NORTH	46
COMMUNITY PROFILES – IPSWICH EAST.....	54

About this Report

The West Moreton Health (WMH) community health profiles have been developed to provide concise snapshots of the public health services, population health status and healthcare priorities across key regions within WMH.

It is intended that this document will support WMH's engagement with staff and stakeholders alike.

West Moreton Health has developed community profiles for eight planning regions within the West Moreton catchment area. Specifically, this includes:

- Lockyer Valley
- Boonah
- Esk
- Gatton
- Springfield
- Ipswich City
- Ipswich North
- Ipswich East

This report is structured to enable timely access to relevant information on each region. It is intended that relevant sections can be used in isolation, clusters or as a whole.

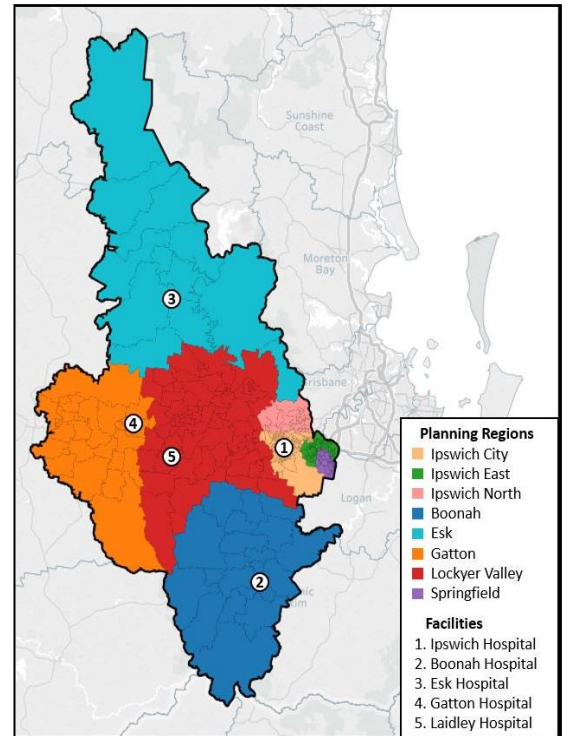
It is important to note that West Moreton Health's planning regions differ to Local Government Areas (LGA). West Moreton Health's planning regions (figure 1) are aligned to 31 Statistical Area Level 2s (SA2's). Maps of the SA2s are available from the Queensland Government Statistician's Office.

<http://www.qgso.qld.gov.au/subjects/society/government/maps/qld-sa2-asgs-2011/index.php>

Data Sources

- Queensland Government Statistician's Office (2018), Queensland Treasury, Queensland Regional Profiles: Resident Profile for West Moreton region.
- Department of Health (2018), projections of future health services activity inpatient projections 2016/17 base year, 2011 ASGS.
- Queensland Health. The health of Queenslanders 2018. Report of the Chief Health Officer Queensland
- Queensland Hospital Admitted Patient Data Collection, Department of Health (2019)

Figure 1, West Moreton planning regions



About West Moreton Health

WMH delivers public health services to a population of more than 290,000 people living in an area covering 9,521 square kilometers and extending from Springfield, Ripley and Ipswich in the east, to Boonah in the south, north to Esk and west to Gatton. It provides medical, surgical, emergency, obstetrics, paediatrics and specialist outpatient services and mental health, critical care, sub-acute and clinical support services.

WMH provides care at the following services:

- Ipswich Health Service
- The Park – Centre for Mental Health
- Boonah Health Service
- Esk Health Service
- Laidley Health Service
- Gatton Health Service
- Goodna Community Health
- Gales Community Care Unit

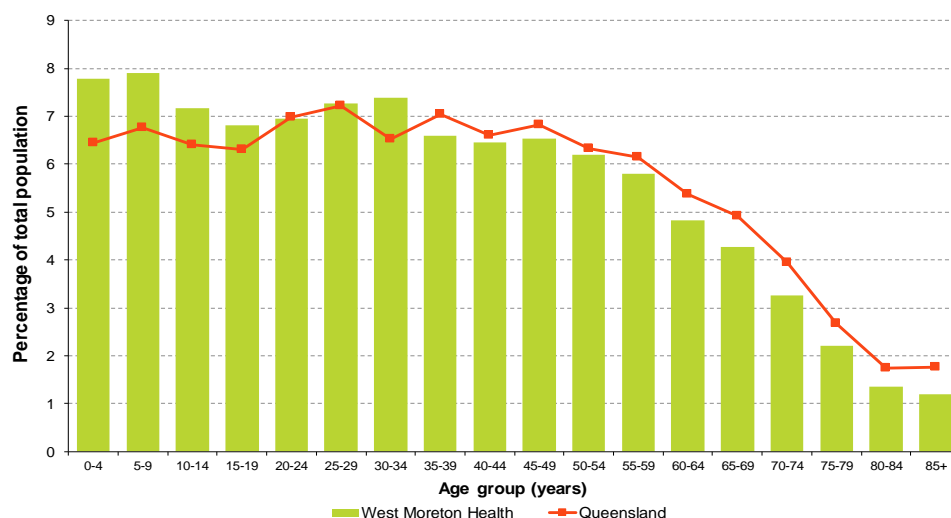
WMH also provides school-based primary oral health care services, community mental health services for all age groups and alcohol, tobacco and other drug services. It provides a range of prisoner health services to Brisbane Women's, Wolston and Brisbane Correctional facilities and the Borallon Training and Correctional Centre. Other state-wide services provided include the Queensland Centre for Mental Health Research, the Queensland Centre for Mental Health Learning and the Queensland Mental Health Benchmarking Unit.

WMH acknowledges and pays respect to the Jagera, Yuggera and Ugarapul people, the Traditional Owners and Caretakers of the land on which the health service is located today and recognises their continuing connection to land, waters and community. We also pay our respects to Elders past, present and emerging.

Our Population

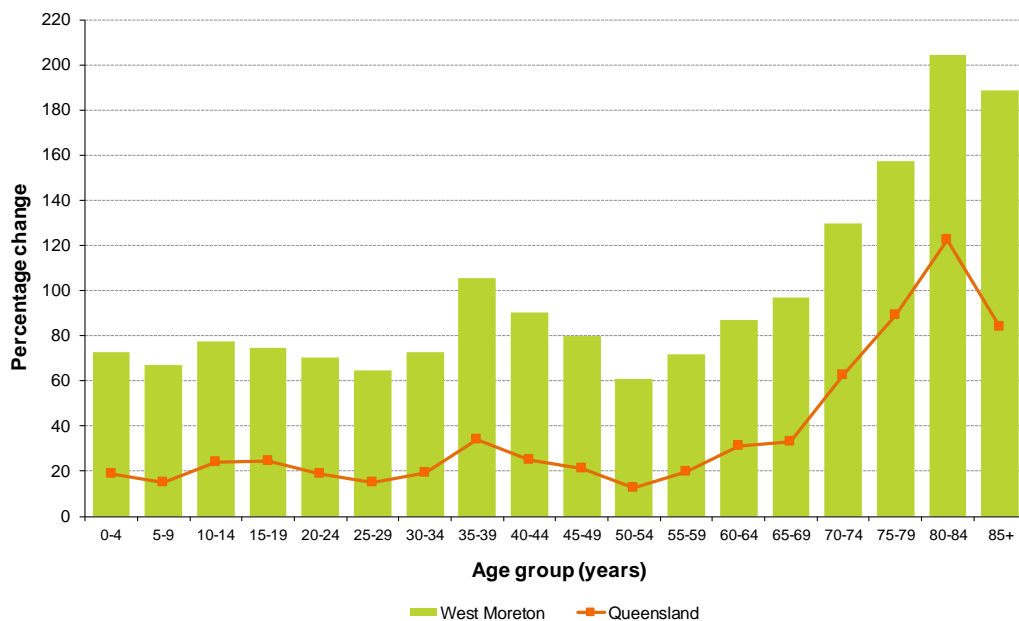
The estimated resident population of WMH as at 30 June 2017 was 286,271 persons, representing about 6% of the Queensland population. Compared with Queensland, West Moreton Health had a larger proportion of young children and adolescents (0 to 19 years of age) and younger adults (30 to 34 years of age), and a smaller proportion of older persons (50 years and over) (figure 2).

Figure 2, Percentage of total estimated population by age group, June 2017
(source WMH's Public Health Unit, Health Indicators Report, 2019)



The West Moreton Health catchment is experiencing remarkable growth. Historically, the region has grown at an annual growth rate (AGR) of 3.0% over the past ten years (Queensland's AGR was 1.8%). The most recent population projections estimate an increase in overall population of around 83% in West Moreton Health from 2016 to 2031. This compares with a projected increase across all of Queensland over the same period of 28%. By far the largest increases are projected to occur in the age groups over 70 years (figure 3). By 2031, it is projected that there will be just under 46,000 more West Moreton Health residents aged 65 years and over than there were in 2016. Such substantial ageing of the population will have major implications for the health and hospital system.

Figure 3, Projected population changes by age group, 2016 to 2031 (source WMH's Public Health Unit, Health Indicators Report, 2019)



Our Demographic Status

The West Moreton community is culturally, linguistically, economically and geographically diverse, encompassing both metropolitan and rural settings.

- 18% of residents were born overseas, compared with a state-wide average of 21.6%.
- Residents' top places of origin include New Zealand (4.6%), England (3.2%), the Philippines (0.9%), India (0.8%), and South Africa (0.5%).
- 11,059 West Moreton people (or 4.1% of the population) identify as Aboriginal and/or Torres Strait Islander. This is comparable to the statewide average of 4%.
- The Socio-Economic Indexes for Areas (SEIFA) are a summary of social and economic conditions of geographic areas. In terms of the Index of Relative Socio-Economic Disadvantage, the West Moreton region is disadvantaged compared to Queensland as a whole. In 2016, up to 33.7% of the population was in Quintile 1, the most disadvantaged measure, and 27.5% of the population was in Quintile 2, the second-most disadvantaged marker.

Our Health Status

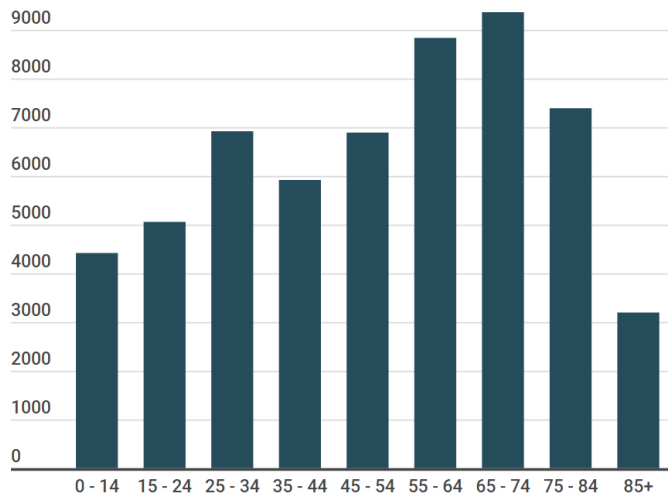
When compared to other Hospital and Health Services across Queensland, the West Moreton community has a higher percentage of people who are obese, living with a disability, living with a cancer diagnoses and are smokers, including women who smoke during pregnancy (figure 4).

Figure 4, West Moreton health status percentages and HHS ranking, Health of Queenslanders 2018 Report, Chief Health Officer

Demographic Description	West Moreton	Compared to Qld
 Deaths	1,433 (44% premature)	11% higher
 Median age at death	76 years	80 years
 Hospitalisations	130,847 (47% of pop)	Crude hospital rate 6% lower than Qld
 Potentially preventable hospitalisations	11,833 (9% of hospitalisations)	17% higher
 Private Health Insurance rate (ASR)	38%	-
 Assistance needed for profound / severe disability	5.9%	-
 Adult daily smokers	15%	28% higher
 Adults who were obese	35%	39% higher
 Children who were overweight or obese	30%	-
 Adult risky drinkers	19%	-
 Women smoking while pregnant	17%	38% higher
 Women obese at conception	29%	-
 Cancer incidence rate (ASR)	543 per 100,000	-

Health service utilisation

Figure 5, West Moreton episodes of admitted care by age 2017/18



In 2016/17, the total number West Moreton region hospital utilisation was split 67% publicly funded hospital activity compared to 33% private activity.

In 2017/18 West Moreton had a total on 57,955 episodes of admitted care (figure 5).

A high number of hospital admissions are attributed to the 25-35 age group, spiking in admissions again in people aged 55-74 with over 8,000 episodes of admitted care.

The most recent Potentially Preventable Hospitalisations (PPH) data 2017/18 showed a total of 7,640 separations (an episode of care for an admitted patient) attributed to PPH's for the West Moreton region. The top three conditions include diabetes complications, chronic obstructive pulmonary disease and urinary tract infections, including pyelonephritis. PPH's are separated into acute, chronic and vaccine preventable categories and some total PPH calculations may appear greater as patients may belong to more than one category and PPH data is calculated by place of residence, not by facility they presented at.

Patient flow and self-sufficiency

Self-sufficiency is the percentage of resident public health demand serviced within the catchment. Based on the self-sufficiency index, West Moreton Health serviced 67% of their public hospital demand.

Patient flow (outflow) represents the proportion of the population who receive services outside their geographic catchment area. Figure 6 represents the outflow for West Moreton residents.

Figure 6, West Moreton patient outflow, 2016/17

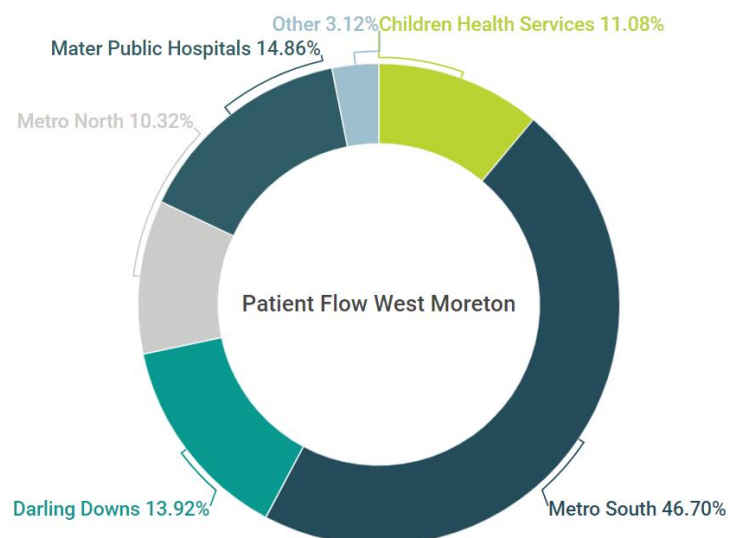
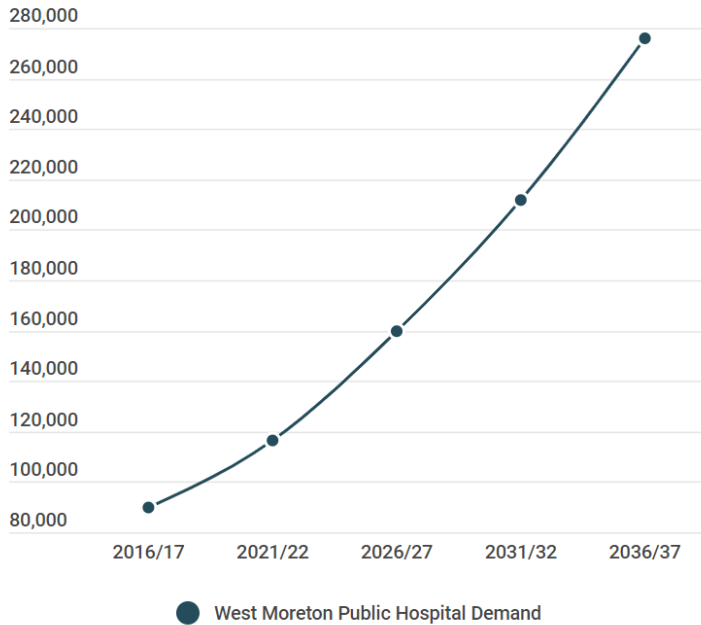


Figure 7, West Moreton public hospital demand (by number of admissions) projections 2016 - 2037



Health service demand

As the population is growing and ageing, so too is the demand for public hospital services. Figure 7 shows the significant growth in projected inpatient hospital demand for the West Moreton region.

It is expected that by 2036/37 the number of public hospital admissions for West Moreton will increase to 275,912, an increase of 207%.